

Correlation of positive Bcl-2 expression with some clinicopathological parameters in Iraqi colorectal cancer patients

علاقة التعبير الايجابي لبروتين Bcl-2 مع بعض مقاييس المرضية – السريرية للمرضى العراقيين المصابين بسرطان القولون والمستقيم

Ahmed Rushdi Al-Dargazali

Biotechnology Research center / Al-Nahrain University

أحمد رشدي الدرگزلي

مركز بحوث التقنيات الاحيائية جامعة النهرين

Abstract

Colorectal cancer is an important public health problem in Iraq. It's considered as the 7th among the commonest 10 cancers by site according to the Iraqi cancer registry. Studying the Bcl-2 expression in colorectal cancer patients is one of the important issue for the prognosis of this tumor. In this study 50 colorectal cancer samples (paraffin embedded sections) were used to detect Bcl-2 expression using Immunohistochemical analysis. The correlation between Bcl-2 expression and site, type and grading was also studied. The results showed that there was a significant difference ($P<0.05$) in the Bcl-2 expression between cancerous tissue and resection margin while the site, type and grading of the tumor showed generally the opposite data. We concluded that the positive Bcl-2 expression occurred at early stages of carcinogenesis and it's a voluble prognostic factor and target for therapy.

المستخلص

يعتبر سرطان القولون والمستقيم من المشاكل الصحية المهمة في العراق حيث يقع في المرتبة السابعة من حيث الترتيب للتسجيل السرطاني في العراق . ويعتبر دراسة تعبير البروتين Bcl-2 في مرضى سرطان القولون والمستقيم من القضايا المهمة لمعرفة الية هذا السرطان . جمعت 50 عينة لمرضى سرطان القولون والمستقيم لدراسة تعبير بروتين ال Bcl-2 باستخدام فحص كيميائي نسيجي مناعي immunohistochemistry لقوالب الشمع الخاصة بهم وكذلك ارتباط هذا التعبير بموقع ونوع ودرجة التمايز لخلايا هذا السرطان . النتائج أظهرت فرقا معنويا ($P<0.05$) في التعبير الموجب لبروتين Bcl-2 بين النسيج السرطاني و الحدود المقطوعة بينما موقع ونوع ودرجة التمايز للخلايا لم تظهر اية فرق معنوي . استنتجنا من خلال هذه الدراسة ان التعبير الموجب لبروتين ال Bcl-2 حدث في المراحل الاولى من التسرطن مما يجعله عامل تقييم مال المرض وكذلك هدفا للعلاج .

Introduction

Colorectal cancer is an important public health problem. There are nearly one million new cases of colorectal cancer diagnosed world-wide each year and half a million deaths [1]. In Iraq, it's the 7th among the commonest 10 cancers by site according to the Iraqi cancer registry [2].

Reduction in the capacity of apoptotic cell turnover could be an important step in the development of neoplasia and one of its arms is Bcl2 which is a proto-oncogene located on chromosome 18q21 and codes 26 kd protein that blocks apoptosis and rescues cells from death [3, 4].

Bcl-2 is a Cytoplasmic protein which can be seen in the mitochondria, endoplasmic reticulum, and the nuclear envelope. The protein can be identified in many different

tissues, in follicular lymphomas, for example, the translocation t (14; 18) results in constitutive overexpression of Bcl-2 and immortalization of lymphocytes [5].

Similarly, Bcl-2 overexpression has been identified in a large number of epithelial tumors like colorectal cancers which reported to show Bcl-2 overexpression [6]. Although, in comparison with adenomas, there is lower intensity of expression in the invasive tumors [6, 7].

There may also be a loss of expression with loss of tumor differentiation and it would appear that the role of Bcl-2 is probably more important in the early development of colorectal tumors than in later tumor progression [8].

The aim of this study is to correlate between positive bcl-2 expression and some histopathological parameters like: site, type and differentiation in Iraqi colorectal cancer patients.

Materials and methods

fifty colorectal cancer cases were collected from both digestive system diseases and liver teaching hospital and Baghdad teaching hospital in 2008.

Patients data were taken from the Histopathological reports that was written by a professional histopathologist which concern: site, type and differentiation of the tumor and resection margin which was the comparison to the cancerous tissues and confirmed to be free of malignancy.

Adequate thin paraffin embedded sections (5 μ m thick) of tumor and resection margins were prepared on positively charged slides for the immunohistochemistry technique which was done by using anti Bcl-2 monoclonal antibodies from DAKO(Denmark) .

The streptavidin biotin indirect method was employed along with DAB (3,3'-diaminobenzidine tetrahydrochlorid) as chromogen and the sections were counterstained with hematoxylin. Cytoplasmic staining was accepted as positive for Bcl-2.

To define the ratio of positivity, 10 fields of each slide was studied under high power magnification (40x) and the percentage of Cytoplasmic positivity for Bcl-2 was graded as follows:

marker	Negative%	Positive%	Reference
Bcl-2	<10	\geq 10	[5,9]

Statistical analysis was performed using ANOVA (2 way) with significant difference (P<0.05).

Results

Clinicopathological data: The current study showed that left colon has the higher frequency and ten cases were mucinous type while three were signet ring and the rest of the fifty cases were adenocarcinoma. Most of the cases were graded as moderately differentiated. Other clinicopathological data are shown in Table (1).

Table (1): Clinicopathological data of colorectal cancer patients.

Variables	Patients (n=50) N (%)
Site of tumor*:	
Right colon	17(34%)
Left colon	19(38%)
Rectum	14(28%)
Tumor Type:	
Adenocarcinoma	37(74%)
Mucinous	10(20%)
Signet ring	3(6%)
Differentiation:	
Well differentiated	4(8%)
Moderately differentiated	36(72%)
Poorly differentiated	10(20%)

*Right colon: transverse, hepatic flexure, cecum and ascending colon. Left colon: splenic flexure, descending colon and sigmoid. Rectum: rectosigmoide and rectum.

Bcl-2 positive Expression:

There was a significant difference ($P < 0.05$) in the positive of Bcl-2 expression of the cancer tissue compared to resection margin Table (2), Figure (1, 2).

Table (2): The positive Bcl-2 expression of the cancer tissue compared to resection margin.

Bcl-2	Bcl-2 expression in cancerous tissue(mean+SE)	Bcl-2 expression in resection margin tissue(mean+SE)
Positive Expression	32.44 ±6.17 A*	14.82±1.28 B

Differences A, B are significant ($P < 0.05$) to compare rows.

Correlation between positive Bcl-2 expression and the site of the colorectal cancer site:

There was a significant difference ($P < 0.05$) in the positivity of the Bcl-2 expression between the cancerous tissue and resection margin inside all colon and rectum anatomical sites except the descending colon which showed no expression in the transverse colon and splenic flexure Table (3).

Table (3) : The positive Bcl-2 expression in all anatomical sites.

	Bcl2. positive expr. % Mean+SE & Site of Tumor													
	ASC.		CECUM		DESC.		H.FLEX		RECTOSIG.		RECTUM		SIGMOID	
	Ca.	R.m.	Ca.	R.m.	Ca.	R.m.	Ca.	R.m.	Ca.	R.m.	Ca.	R.m.	ca	R.m.
Positive Expression	A*	B	A*	B	A	A	A*	B	A*	B	A*	B	A*	B
	27.33	0.0	29.12	17.25	33.40	24.20	42.00	16.80	25.00	13.33	40.73	15.18	25.36	11.29
	±	±	±	±	±	±	±	±	±	±	±	±	±	±
	5.70	0.0	1.78	2.51	2.74	2.16	8.73	3.10	2.34	3.09	3.67	1.13	8.33	1.92

Differences A, B are significant ($P < 0.05$) to compare rows, ca: cancer; R.M.: resection margin.

There was no significant difference ($P < 0.05$) in positive Bcl-2 expression of the cancerous tissue (compared with other sites) between the ascending colon, rectosigmoid and sigmoid. While the only significant difference ($P < 0.05$) appeared in positive Bcl-2 expression of the resection margin were ascending and descending colon compared with the other anatomical sites Table (4)

Table (4) : The correlation between different anatomical sites and Bcl-2 positive expression.

		Bcl-2. positive expr. % Mean+SE & Site of Tumor						
		ASC.	CECUM	DESC.	H.FLEX	RECTOS	RECTU	SIGMOI
		A	AB	B	C	IG. A	M C	D A
Ca.	Positive	27.33	29.12	33.40	42.00	25.00	40.73	25.36
		\pm 5.70	\pm 1.78	\pm 2.74	\pm 8.73	\pm 2.34	\pm 3.67	\pm 8.33
R.m.	Positive	0.0	17.25	24.20	16.80	13.33	15.18	11.29
		\pm 0.0	\pm 2.51	\pm 2.16	\pm 3.10	\pm 3.09	\pm 1.13	\pm 1.92

Differences A, B, AB & C are significant ($P < 0.05$) to compare rows, ca: cancer; R.M.: resection margin

Correlation between positive Bcl-2 expression and the colorectal cancer type:

There was a significant difference ($P < 0.05$) in the positivity of the Bcl-2 expression between the cancerous tissue and resection margin inside all the 3 types presented in this study Table (5)

Table (5): The positive Bcl-2 expression in all types of colorectal cancer

		Bcl-2 positive expr. % Mean+SE & Cancer type					
		AC		MUCINOUS		SIGNET RING	
		Cancer	R.marg	cancer	R.marg	cancer	R.marg
		A*	B	A*	B	A*	B
Positive		33.19 \pm 2.15	16.19 \pm 1.37	30.60 \pm 5.05	12.00 \pm 1.71	29.33 \pm 5.40	7.33 \pm 2.70

Differences A, B are significant ($P < 0.05$) to compare rows, ca: cancer; R.M.: resection margin

While There was no significant difference ($P < 0.05$) in positive Bcl-2 expression of the cancerous tissue between those 3 types of colorectal cancer but there was significant difference ($P < 0.05$) in positive Bcl-2 expression of the resection margin tissue between adenocarcinoma and signet ring Table (6).

Table (6): The correlation between all types of colorectal cancer according to the Bcl-2 positive expression.

		Bcl-2 positive expr. % Mean+SE & Cancer type		
		AC	MUCINOUS	SIGNET RING
		A	A	A
Cancer	Positive	33.19 \pm 2.15	30.60 \pm 5.05	29.33 \pm 5.40
R.marg	Positive	16.19 \pm 1.37	12.00 \pm 1.71	7.33 \pm 2.70

Differences A, B are significant ($P < 0.05$) to compare rows, ca: cancer; R.M.: resection margin.

Correlation between positive Bcl-2 expression and the grading of the colorectal cancer cells

There was a significant difference ($P < 0.05$) in the positivity of the Bcl-2 expression between the cancerous tissue and resection margin inside all the 3 types types of differentiation Table (7).

Table (7): The positive Bcl-2 expression in all colorectal cancer grades

	Bcl-2 Positive expr. % Mean+SE & Differentiation of cells					
	MD		PD		WD	
	Cancer A*	R.marg B	cancer A*	R.marg B	cancer A*	R.marg B
Positive	31.75±6.16	16.89±1.85	35.60±2.78	6.20± 3.48	30.75±3.98	17.75±2.39

Differences A, B are significant ($P < 0.05$) to compare rows, WD: well differentiated, MD: moderately differentiated, PD: poorly differentiated, ca: cancer; R.M.: resection margin

There was no significant difference ($P < 0.05$) in positive Bcl-2 expression of the cancerous tissue between those 3 types while poorly differentiated cells showed significant difference ($P < 0.05$) in the positivity of Bcl-2 expression of the resection margin compared with others Table (8).

Table (8): The correlation between all colorectal cancer grades concerning positive Bcl-2 expression.

Bcl-2 positive expr. % Mean+SE & Differentiation of cells				
		MD A	PD A	WD A
Cancer	Positive	31.75±6.16	35.60±2.78	30.75±3.98
R.marg	Positive	16.89±1.85	6.20± 3.48	17.75±2.39

Differences A, B are significant ($P < 0.05$) to compare rows, WD: well differentiated, MD: moderately differentiated, PD: poorly differentiated ca: cancer; R.M.: resection margin.

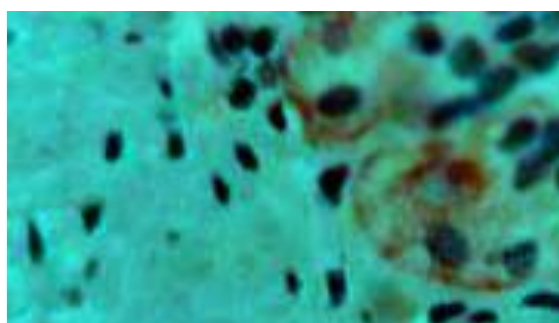


Figure (1): Immunohistochemical staining in colorectal cancer sections. Bcl-2 cytoplasmic positive Immunostaining by peroxidase/DAB (brown) counterstained with hematoxylin 40x.

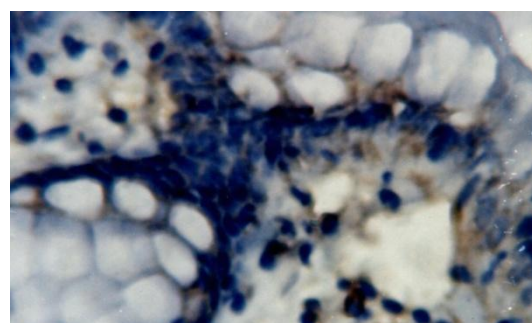


Figure (2): Immunohistochemical staining in colorectal cancer sections. Epithelial Bcl-2 cytoplasmic positive immunostaining by peroxidase/DAB (brown) counterstained with hematoxylin 40x.

Discussion

In the gastrointestinal tract the physiologic expression of Bcl-2 protein is confined to the stem cells and the proliferative zone, i.e., the lower crypt of the intestinal or colonic mucosa [10, 11]. Obviously, the function of Bcl-2 here is to protect the

regenerative epithelial compartment from cell death. Although shedding of differentiated and mature cells to the luminal surface is the major mechanism of cellular loss in the gastrointestinal tract, apoptosis seems to be triggered before mechanical cell elimination takes place. Thus, apoptosis also contributes physiologically to the normal intestinal cell turn-over [12, 13, 14, 15, 16].

Bcl-2 is strongly expressed in most colorectal adenomas and carcinomas, with the highest incidence in adenomas. Bcl-2 expression is evidently characteristic of early stages in colorectal carcinogenesis followed by other genetic changes (like TP53 loss). Thus, apart from genetic changes leading to deregulation of proliferation, the inhibition of apoptosis by bcl-2 expression may also promote tumor growth at this stage of carcinogenesis [17].

In this study, there was a significant positive expression of Bcl-2 in the cancerous tissue comparing to the resection margin which revealed a better clinical outcome and it would appear that the role of Bcl-2 is probably more important in the early development of colorectal tumors than in later tumor progression according to many studies concerning colorectal cancers and other type of cancers like: non small cell lung cancer, B-cell lymphomas, almost all thyroid cancers and ovarian carcinomas [17,18].

The correlation between high proliferation rate and a high rate of apoptosis in carcinomas suggests that an excess of putatively inappropriate or conflicting growth signals may also trigger apoptosis [17, 19, 20].

Others suggested that there is a shifting from expression of the anti-apoptotic Bcl-2 to Bcl-xl which with the expression of the c-Myb predict a poor prognosis [22]. By time, P53 will act as a transcriptional factor that has the capacity to alter the expression ratios of Bcl-2 and Bcl-xL (down-regulated) and Bax (up-regulated) in favor of apoptosis [21].

Also, Bcl-2 function may be sacrificed for another advantage (such as loss of DCC which is an oncosuppressor gene on chromosome 18). These data dovetail, to some degree, with the data showing a correlation between loss of expression of DCC protein and poor prognosis as both the Bcl-2 and DCC genes occur on chromosome 18q21[20].

Finkel and his colleagues provided us with another theory about how Bcl-2 expression could be a predictor for a good prognosis in colorectal cancer as well as a target for therapy by showing that Bcl-2 suppress autophagy which in turn will made the tumor cell a senescent one and we can here explain why the positive Bcl2 expression has a good outcome in colorectal cancer patients as well as it's a prognostic marker [22,23]. Other researchers postulated that Loss of pSer70 Bcl-2 expression is closely linked to biological aggressiveness in colorectal tumors and represents a statistically significant molecular index for prognosis of patients with these tumors [24].

Most of the articles concerning positive Bcl2 expression and colorectal tumor site association mentioned no correlation [3,5,20,21,22,23]. While in our study the correlation existed between different sites especially between the hepatic flexure and rectum which can be explained that the cancers at or below the peritoneal reflection

(rectosigmoide/rectum) are more aggressive compared with those above the reflection (colon) and the worse prognosis for patients with lesions in the right colon [25].

According to the type of colorectal cancers, it was observed that there was a significant correlation of the positive Bcl-2 expression between the cancerous tissue and resection margin inside the three types of colorectal cancer which it was not between the three types and also mentioned in other studies [3].

The results concerning the bcl-2 positive expression correlated to grading of colorectal cancers showed insignificant results which can be seen also in other studies [3,17,23,24].

References

1. Boyle, P. and Leon, M. (2002). Epidemiology of colorectal cancer. *Br. Med. Bull.* ,64 (1): 1-25.
2. Iraqi cancer board. (2008). Iraqi cancer registry2004. Ministry of Health. Iraq.
3. Dursun, A.; Poyraz, A.; Suer, O.; Sezer, C. and kyol, G. (2001). Expression of Bcl2 and c-ErB-2 in colorectal neoplasia. *Pathology Oncology Research.*7:24-27.
4. Tsamandas, A.; Kardamakis, D.; Petsas, T.; Zolota, V.; Vassillol, V.; Matatsoris, T.; Kalofonos, H.;Vagianos ,C. and Scopa, C. (2007). Bcl-2, Bax and p53 Expression in Rectal Adenocarcinoma. Correlation with Classic Pathologic Prognostic Factors and Patients' Outcome. *In Vivo.* 21(1):113-8.
5. Ilyas, M. ; Hao, X.; Wilkinson, K.; Tomlinson, I .; Abbasi, A.; Forbes , A.; Bodmer ,W. and Talbot, I. (1998). Loss of Bcl-2 expression correlates with tumor Recurrence in colorectal cancer. *Gut.* 43:383–387.
6. Hague, A.; Moorghen, M.; Hicks, D.; et al. (1994). BCL-2 expression in human colorectal adenomas and carcinomas. *Oncogene.* 9:3367–70.
7. Reed, JC. (1994). Bcl-2 and the regulation of programmed cell death. *J. Cell Biol.*124:1–6.
8. Watson, A.J.; Merritt, A.J.; Jones, L.S.; et al. (1996). Evidence of reciprocity of bcl-2 and p53 expression in human colorectal adenomas and carcinomas. *Br. J. Cancer.* 73:889–95.
9. Sulkowska, M.; Famulski, W.; Sulkowski, S.; Reszec, J.; Koda, M.; Baltaziak, M. and L. Kan´czuga-Koda. (2003). Correlation between Bcl-2 Protein Expression and Some Clinicopathological Features of Oral Squamous Cell Carcinoma. *Pol. J .Pathol.* 1:49-52.
10. Hockenbery, DM. ; Zutter M. ; Hickey W. ; Nahm M. and Korsmeyer SJ. (1991). bcl-2 protein is topographically restricted in tissues characterized by apoptotic cell death. *Proc. Nut. Acad Sci USA.* 88:6961-6965.
11. LeBrun, D.P.; Warnke R.A. and Cleary M.L. (1993). Expression of bcl-2 in fetal tissues suggests a role in morphogenesis. *Am J Pathol.* 142:743-53.
12. Eastwood, GL. (1977). Gastrointestinal epithelial renewal. *Gastroenrerology.* 72:962-75.
13. Eastwood, GL. (1992). Epithelial renewal in premalignant conditions of the gastrointestinal tract: A review. / *Clirz Gasroenrerol;* 14(Suppl. i):S29-33.
14. Gavrieli, Y.; Sherman Y. and Ben-Sasson SA. (1992). Identification of programmed cell death in situ via specific labeling of nuclear DNA fragmentation. *J.Cell Riol.* 119:493-501.

15. Ansari, B.; Coates P.J. ; Greenstein B.D. and Hall P.A. (1993). In situ end labeling detects DNA strand breaks in apoptosis and other physiological and pathological states. *J Pathol* 170:1-8.
16. Benedetti A. ; Mancini R.; Marucci L.; Paolucci F.; Jezequel A.M.; Orlandi F. (1990). Alimentary tract and pancreas: Quantitative study of apoptosis in normal rat gastroduodenal mucosa. *J. Gastroenterol Hepatol.* 5:369-74.
17. Baretton, G.B.; Diebold, J.; Christoforis, G.; Vogt, M.; Miiller, C.; Dopfer, K.; Schneiderbanger, K.; Schmid, M. and Lohrs, U. (1996). Apoptosis and Immunohistochemical bcl-2 Expression in Colorectal Adenomas and Carcinomas Aspects of Carcinogenesis and Prognostic Significance. *Cancer.* 77:255-264.
18. Ofner, D.; Riehemann K.; Maier H.; Riedmann B.; Nehoda H.; Totsch M.; Bocker W.; Jasani B. and Schmid K.W. (1995). Immunohistochemical detectable Bcl-2 expression in colorectal carcinoma: correlation with tumor stage and patient survival. *Brit. J. Cancer* 72:11-16.
19. Barretton, G.B. ; Diebold, J. ; Christoforis ,G. ; Vogt ,M. ; Muller ,C. ; Dopfer, K. ; Schneiderbanger, K. ; Schmidt, M. and Lohrs ,U. (1996). Apoptosis and Immunohistochemical Bcl-2 expression in colorectal adenomas and carcinomas. *Cancer* 77: 255-264.
20. Jiang, M. and Milner, J. (2003). Colorectal cancer cells Bcl-2 constitutively suppresses p53-dependent apoptosis in colorectal cancer cells. *Genes Dev.* 17: 832-837.
21. Biroccio, A.; Benassi, B.; Dagnano, I.; Dangelo, C.; Buglioni, S.; Mottolese, M.; Ricciotti, A.; Citro, G.; Cosimelli, M.; Ramsay, R.B.; Calabretta, B. and upi, G. (2001). c-Myb and Bcl-x overexpression predicts poor prognosis in colorectal cancer. *American journal of pathology.* 4:1289-1299.
22. Finkel, T.; Serrano, M. and Blasco, M. A. (2007). The common biology of cancer and ageing. *Nature.* 448:767-774.
23. Zavrides, H. ; Zizi-Sermpetzoglou, A.; Elemenoglou, I.; Papatheofanis, I. ; Peros,G.; Athanasas, G. and Panousopoulos, D. (2006). Immunohistochemical expression of bcl-2 in UICC stage I and III colorectal carcinoma patients: correlation with c-erbB-2, p53, ki-67, CD44, laminin and collagen IV in evaluating prognostic significance. *Pol. J. Pathol.* 57:149-59.
24. Eisaku, K .; Takayoshi, M.; Masao, S.; Toshikazu, K.; Hiromi, I.; Shin-ichi, N.; Takehiro, T.; Nobuya, O.; Koichi, I.; Takashi,O.; Hiroyuki, Y.; Futoshi, S. and Tadashi, Y. (2005). Expression of Phosphorylated Ser70 of Bcl-2 Correlates with Malignancy in Human Colorectal Neoplasms .*Clin. Cancer Res.* 11:7255-7263.
25. V.T., De Vita; Hellman, J.S. and Rosenberg, S.A. (1997). *Cancer:principls and practice of oncology.* 5th ed., Lippincott-Raven.